

News Release

May 26, 2021

SDGs activity in the life care business Dormitory for elderly care workers from overseas completed

Shinoken Group Co., Ltd. (Tokyo Headquarters: Minato-ku, Tokyo, President Hideaki Shinohara, TSE Ticker 8909, further referred to as Shinoken), as part of the SDGs activities, has been proceeding the program of accepting elderly care workers from overseas. Regarding this program, the construction of the dormitory for those coming to Japan, has been completed.

As a matter of corporate social responsibility, Shinoken endorses the philosophy of the SDGs (Sustainable Development Goals), which consist of 17 goals and 169 targets to realize a sustainable world and leave no one behind on the planet, and continues to implement specific initiatives.



Shinoken, with its vision of becoming “A Life Support Company for every generation across the world”, has been developing its life care business since 2012, and is working to achieve the SDGs. With the completion of the dormitory, we would like to take this opportunity to introduce the overall picture of accepting elderly care workers from Indonesia.

Steps we have taken in this program

- Nov, 2019 Entered a partnership with an Indonesian university ([Press release](#))
- Oct, 2020 Entered a partnership with an Indonesian school of nursing ([Press release](#))
- Oct, 2020 Began the construction of the dormitory for those coming to Japan
- Dec, 2020 Shinoken office service Co., Ltd. becomes a Registered Support Organization, based on the Specified Skilled Worker program.
- Apr, 2021 Preparation completed for the first 17 members to come to Japan
- May, 2021 Completion of the dormitory

Developed a root to secure elderly care workers from Indonesia

Using the advantage of having a business base in Indonesia, Shinoken has formed a partnership with an Indonesian University ([Press release](#)) and an Indonesian school of nursing ([Press release](#)) to secure human resources.

After passing the required examinations, they will work at elderly care facilities owned and operated by Shinoken in the Life care business, utilizing their status of residence as Specified Skilled Worker program. Shinoken Office Service Co., Ltd. will serve as the contact point for acceptance and support in Japan.



Preparation completed for the first 17 members to come to Japan

The first 17 members from Indonesia have already passed the Japanese Language Proficiency Test and the Nursing Care Proficiency Test, which are required in the Specified Skilled Worker program, and have completed preparations for coming to Japan, including obtaining passports and visas.

Due to the spread of COVID-19, travel between Japan and Indonesia is currently restricted, but they will come to Japan and work as soon as they are able to travel.

【On line meeting with the members】



Completion of the dormitory “Seiunkan Osaka”

“Seiunkan Osaka” has been designed with a variety of features, including private rooms, a community space where people can enjoy meals together, and a rooftop terrace, so that people coming from overseas can quickly get used to Japan and live comfortably. The building is wooden structured, one of Shinoken's specialties that comes from experience and achievements, and contributes to the SDGs in the environmental point of view, such as CO2 absorption effects.



Exterior



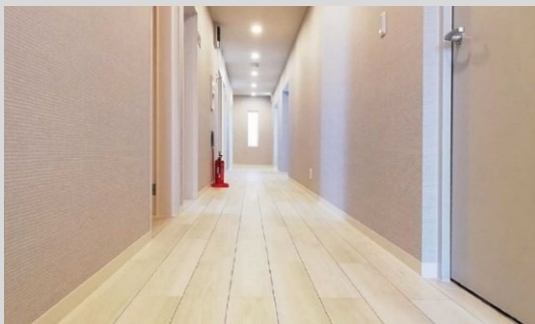
Entrance with automatic lock



Community space



Rooftop terrace



Bright colored corridor



Private rooms equipped with furniture

【Overview of the Dormitory】

Name	“Seiunkan Osaka” (2nd & 3rd floor) “Ju-life Fukae” (1st floor)
Location	Oimazato, Higashinari-ku, Osaka (Subway Shin-fukae)
Structure	3 floors Wooden structure (Fireproof)
Rooms	21 (2nd & 3rd floor) ※11 rooms on the 1st floor are for the elderly
Owner	Shinoken Wellness Co., Ltd.
Design・Build	Shinoken Produce Co., Ltd.

【SDGs regarding the acceptance of elderly workers from Indonesia】



- Training human resources in developing countries and employing them in Japan
- Dealing with shortage of elderly care workers
- Partnerships with schools in Indonesia

【SDGs regarding the dormitory】



- Building a dormitory for foreign workers
 - Wooden architecture
- Reduce CO2 by shorter construction period
CO2 absorption and storage effects
Efforts to recycle waste wood
Achieving carbon neutrality

Construction site



Shinoken will continue to promote a variety of initiatives to achieve the SDGs in each of its businesses by gathering the strength of our Group.

**Shinoken has the vision of becoming
“A life Support Company for every generation across the world”
that provides value throughout the lifetime of our customers.
We initiate Asset development solutions for an era of 100-year life span, Construction Business, Energy Business, managing elderly care facilities, providing care for people with disabilities, Real Estate Fund Business, both domestic and overseas.
Also, we will thrive to resolve various social tasks by driving REaaS.**

*REaaS: Real Estate as a Service

Inquiries regarding this release

Group PR & IR Office, Shinoken Group Co., Ltd.
1-1-1, Tenjin, Chuo-ku, Fukuoka
TEL +81-92-714-0040 FAX +81-92-714-0064

WEB <https://www.shinoken.co.jp/en/> MAIL skg_pr@shinoken.co.jp