

News Release

Jun.30, 2021

Shinoken opens a new Serviced housing for the elderly "Ju-life Shakujidai"

Shinoken Wellness (CEO Yoshiaki Miura), a Life care specialized subsidiary of Shinoken Group Co., Ltd. (Tokyo Headquarters: Minato-ku, Tokyo, President Hideaki Shinohara, TSE Ticker 8909, further referred to as Shinoken) has opened a new Serviced housing for the elderly.



Serviced housing for the elderly, and daycare service

On June 1, "Ju-life Shakujidai," a serviced housing for the elderly, and "Applife Shakujidai," a daycare service facility has opened, in a prime location near the lush greenery of Shakujii Park. We expect to be able to meet the demand for elderly care in the area by providing services at both facilities in the same building, which was renovated from a housing complex (company dormitory) that we acquired last year.

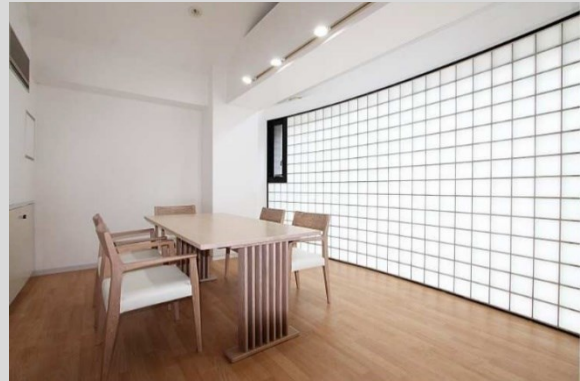
【Facility Outline】

Name	Ju-life Shakujidai
Address	6-3-19, Shakujidai, Nerima-ku, Tokyo
Access	Nearest station : Seibu Ikebukuro line "Oizumi Gakuen"
Rooms for rent	46 rooms
Target residences	Aged 60 or older, or those who have been certified as requiring nursing care or support
Structure	Reinforced concrete 5 floors
Room size	16.2~18.26 sqm

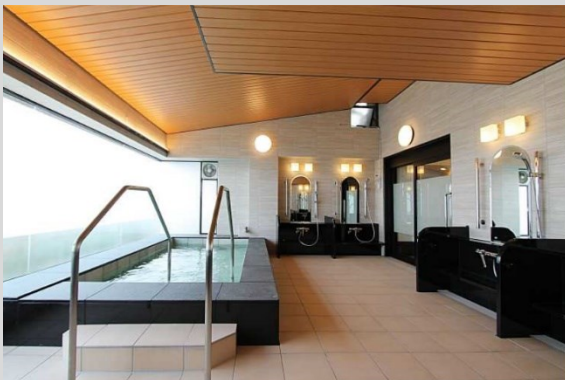
[Common areas]



Dining room ① with a relaxed atmosphere



Bright dining room ② with natural light



Large bath with artificial hot spring effects



Living room water area

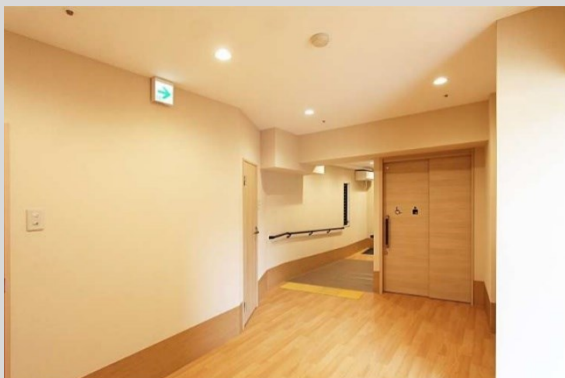
[Daycare service]



Main area with high ceilings and open space



Courtyard with checkered lawn



Warm wood-grained hallway area



A consultation room facing the garden

Shinoken will continue its efforts to meet the needs of the increasingly growing elderly population, and will continue to expand the Life care business and provide a wider range of services.

**Shinoken has the vision of becoming
“A life Support Company for every generation across the world”
that provides value throughout the lifetime of our customers.
We initiate Asset development solutions for an era of 100-year life
span, Construction Business, Energy Business, managing elderly care
facilities, providing care for people with disabilities, Real Estate Fund
Business, both domestic and overseas.
Also, we will thrive to resolve various social tasks by driving REaaS.**

*REaaS: Real Estate as a Service

Inquiries regarding this release

Group PR & IR Office, Shinoken Group Co., Ltd.
1-1-1, Tenjin, Chuo-ku, Fukuoka
TEL +81-92-714-0040 FAX +81-92-714-0064
WEB <https://www.shinoken.co.jp/> MAIL skg_pr@shinoken.co.jp